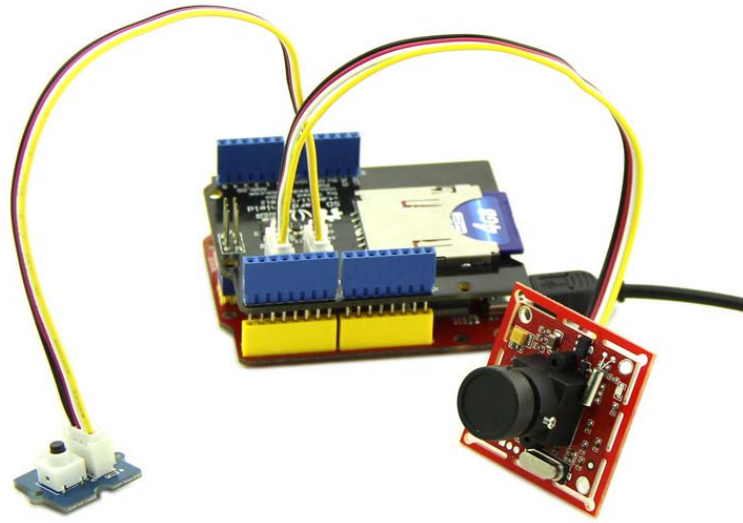


## Grove - Serial Camera Kit

SKU 101020000

Grove - Serial Camera Kit includes one control board and two interchangeable lenses, one is standard lens and the other is wide-angle lens. It's a great camera for Arduino centered image recognition projects, because 30W pixel wouldn't be overwhelming for Arduino, so that real-time image recognition is possible. To make it more fun and playable, lenses of two specs are shipped in this kit. The standard one is for common photo shots and the wide-angle one is specially suitable for monitoring projects.



### Features

- Photo JPEG compression, high, medium and low grades Optional
- AGC
- Auto Exposure Event Control
- Automatic White Balance Control
- Focus adjustable

For all Grove users (especially beginners), we provide you guidance PDF documents. Please download and read through [Preface - Getting Started](#) and [Introduction to Grove](#) before your using of the product.

### ECCN/HTS

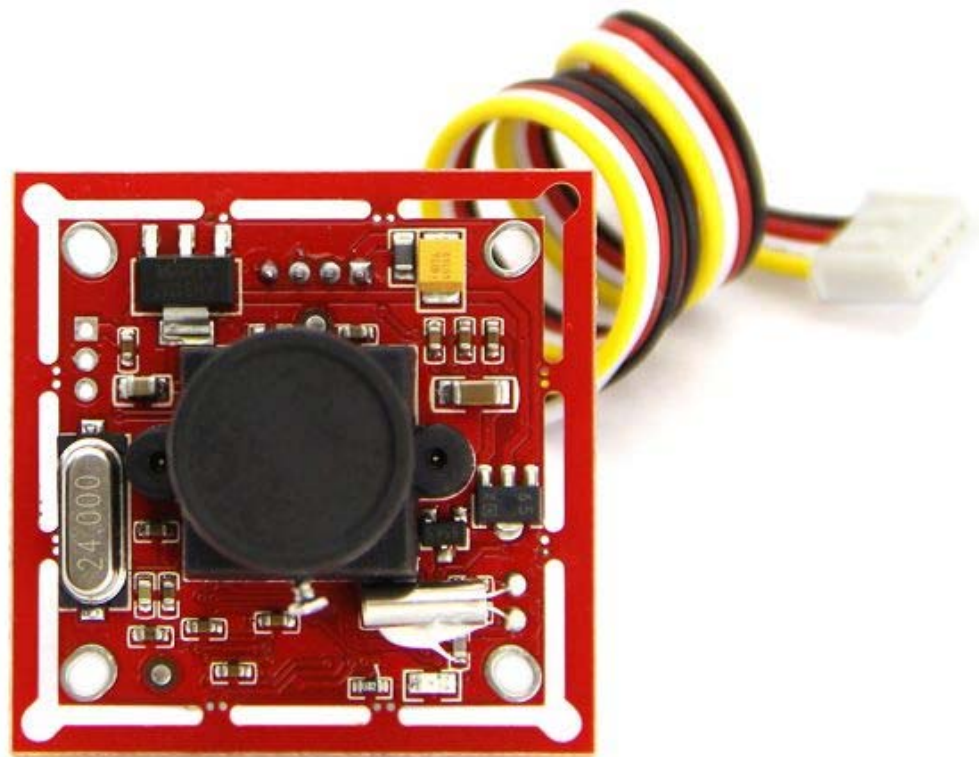
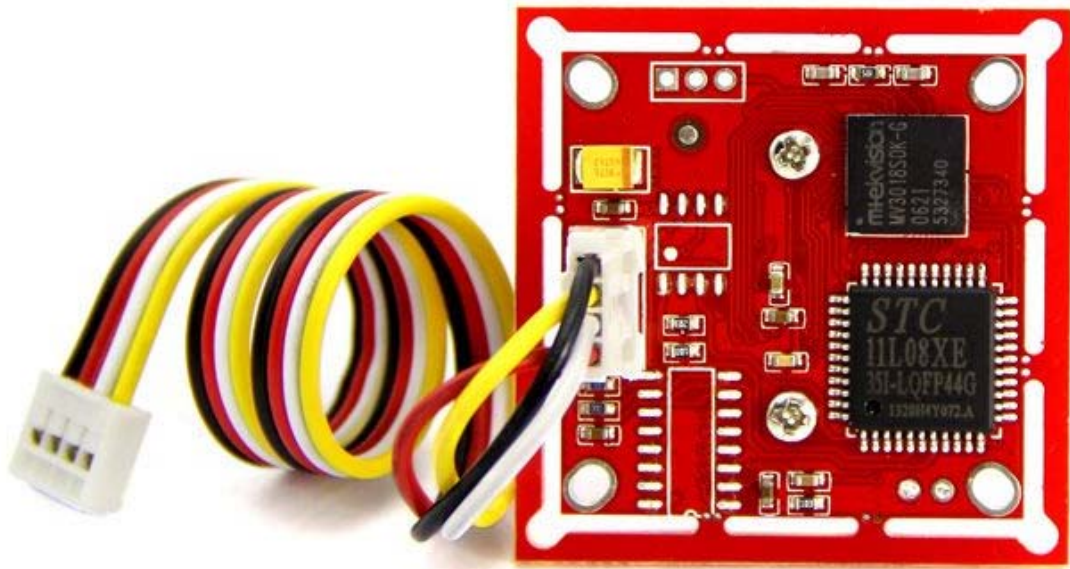
ECCN	EAR99
HSCODE	8525801390
USHSCODE	8525803010
UPC	841454107682
ROHS	1

## Technical details

Dimensions	0mm x0mm x0mm
Weight	G.W 0.025g
Battery	Exclude
Input Voltage	5V
Pixel	300,000
Resolution	640*480, 320*240, 160*120
Uart Baud Rate	9600~115200
Communication	RS485 and RS232

## Part List

Grove - Serial Camera Kit	1
Grove Cable	1



<https://www.seeedstudio.com/Grove-Serial-Camera-Kit.html>5-24-1