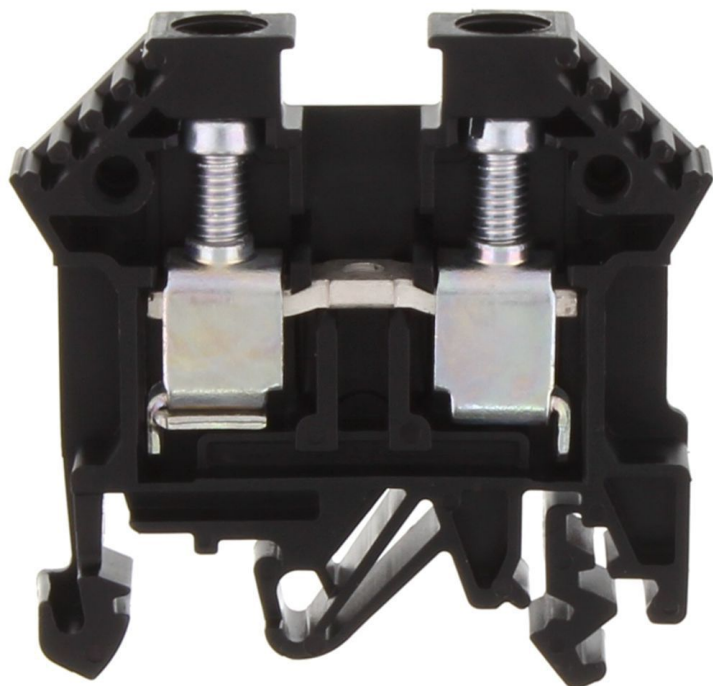


# Data sheet

## 1005.4 RK 6-10 BK



Feed-through terminal, Screw connection, Mounting type:Mounting rail TS 35/7.5 and TS 32, Rated cross-section: 10 mm², Width: 8 mm, Colour: Black

RAL: 9005

### Business data

Article number	1005.4
Article name	RK 6-10 BK
GTIN (EAN)	4044211001209
Packaging unit	100
Quantity unit	PC
Weight per piece (not including packaging)	14.8 g
Weight per piece (including packaging)	15.45 g
Unit of weight	G
Customs number	85369010
Country of origin	CZ
Prio-Article	1005.2
Product description	Feed-through terminal

# Data sheet

## 1005.4 RK 6-10 BK

### Technical data

#### Dimensions

Length	48 mm
Width	8 mm
Height TS 35/7.5	47 mm
Height TS 32	51.5 mm

#### Ratings

Rated voltage	800 V
Rated current	57 A
Rated cross-section	10 mm <sup>2</sup>
Rated impulse voltage	6 kV
Overvoltage category	III
Contamination degree	3
Maximum power dissipation for nominal condition	1.82 W

#### Connection data

Connection principle	Screw connection
Connection position	Lateral
Connections	2
Number of terminals per level	2
Number of levels	1
Wire cross-section single-core (rigid) / stranded, min.	0.2 mm <sup>2</sup>
Wire cross-section single core (rigid)/stranded, max.	10 mm <sup>2</sup>
Wire cross-section stranded, min.	0.2 mm <sup>2</sup>
Wire cross-section stranded, max.	10 mm <sup>2</sup>
Wire cross-section stranded with wire-end ferrules, min.	0.2 mm <sup>2</sup>
Wire cross-section stranded with wire-end ferrules, max.	10 mm <sup>2</sup>
Wire cross-section AWG, min.	22
Wire cross-section AWG, max.	8
Stripping length	12 mm
Screw head	Slotted
Screw threading	M 4
Tightening torque, min.	1.2 Nm
Tightening torque, max.	2 Nm

# Data sheet

## 1005.4 RK 6-10 BK

### Technical data

#### Materials

Insulation housing	Polyamide 6.6
Flammability class UL 94	V-2
Working temperature, min.	-40 °C
Working temperature, max.	105 °C

#### Further technical data

Mounting type	Mounting rail TS 35/7.5 and TS 32
Gauge plug acc. to EN 60 947-1	A5
Number of cross-connection channels	1
End plate required	✓
Number of test pick-off options	1

#### Environmental Product Compliance

REACH Conform	Yes
REACH Reference date	2023-06-14
REACH Candidate Substance Note	No
RoHS Conform	Yes

# Data sheet

## 1005.4 RK 6-10 BK

### Approvals

#### Standards and regulations

EAC approval	TR ZU 004/2011
EAC approval granted	yes

#### CSA approval

CSA approval	C22.2 No 158
CSA approval granted	yes
CSA Usegroup C: rated voltage	600 V
CSA Usegroup C: rated current	55 A
CSA wire cross-section AWG, min.	22
CSA wire cross-section AWG, max.	10
CSA stripping length	12 mm
CSA torque, max.	2 Nm
CSA torque, min.	1.2 Nm
CSA File Number	042110_0_000

#### KEMA KEUR approval

KEMA KEUR approval	EN 60947-7-1:2009
KEMA KEUR approval granted	yes
KEMA rated voltage	800 V
KEMA rated current	57 A
KEMA rated impulse voltage	6 kV
KEMA wire cross-section single core (rigid), min.	0.2 mm <sup>2</sup>
KEMA wire cross-section single-core (rigid), max.	10 mm <sup>2</sup>
KEMA wire cross-section stranded, min.	0.2 mm <sup>2</sup>
KEMA wire cross-section stranded, max.	10 mm <sup>2</sup>
KEMA torque, min.	1.2 Nm
KEMA torque, max.	2 Nm

# Data sheet

## 1005.4 RK 6-10 BK

### Approvals

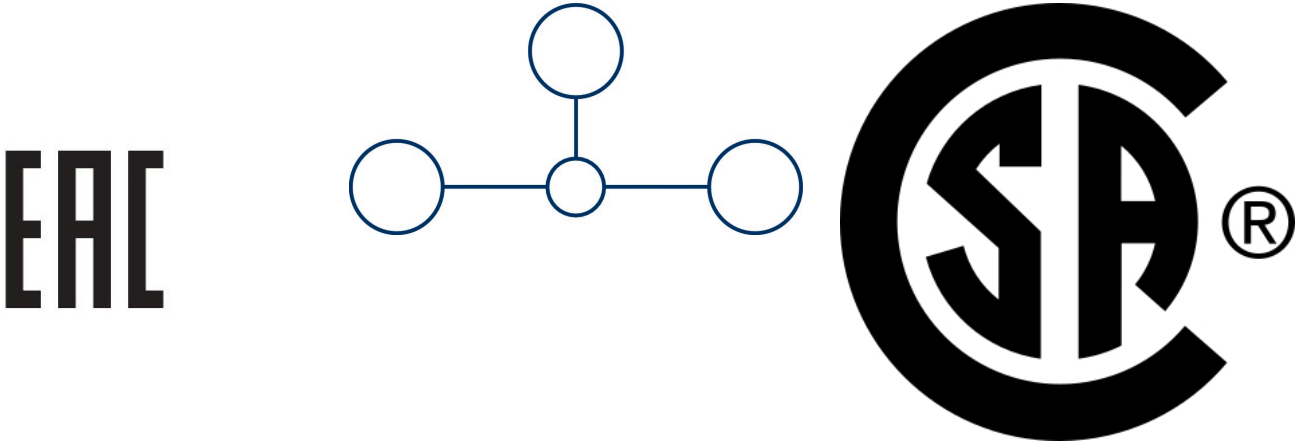
#### UL Recognized

UL approval	UL 1059
UL Usegroup C: rated voltage	600 V
UL Usegroup C: rated current	65 A
UL wire cross-section single-core (rigid) AWG, min.	22
UL wire cross-section single-core (rigid) AWG, max.	6
UL wire cross-section stranded AWG, min.	22
UL wire cross-section stranded AWG, max.	6
UL torque	12 Lb In
UL wire material	Cu
UL factory wiring	1
UL field wiring	1
UL File Number	E95701
UL Recognized	1

#### German Lloyd approval

DNV GL Certificate number	TAE000014T
DNV GL Location Classes	Temperature: B, Humidity: B, Vibration: A
DNV GL approval granted	1
DNV GL rated cross-section	10 mm <sup>2</sup>
DNV GL rated current	61 A
DNV GL rated voltage	750 V
DNV GL test standard	IEC 60947-7-1:2002

Media



# Data sheet

## 1005.4 RK 6-10 BK

### Accessories

#### Cover



Cover, Length: 26.5 mm, Width: 8 mm, Colour: White

Article number	Article name	GTIN (EAN)	Packaging unit
<u>2966.0</u>	AD 1/8 WH	4044211056957	50 ST



Cover, Length: 32 mm, Width: 28 mm, Colour: Yellow

Article number	Article name	GTIN (EAN)	Packaging unit
<u>2054.0</u>	AD 4/32/B YE	4044211048600	50 ST



Cover, Length: 32 mm, Width: 28 mm, Colour: Yellow

Article number	Article name	GTIN (EAN)	Packaging unit
<u>2495.0</u>	AD 4/32/B/E YE	4044211052966	50 ST



Cover, Length: 26.5 mm, Width: 8 mm, Colour: Yellow

Article number	Article name	GTIN (EAN)	Packaging unit
<u>2954.0</u>	AD 1/8/B YE	4044211056827	50 ST

#### End plate



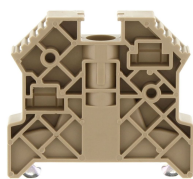
End plate, Width: 1.5 mm, Colour: Beige

Article number	Article name	GTIN (EAN)	Packaging unit
<u>2001.2</u>	AP 2,5-10 BG	4044211047979	50

#### End stop

# Data sheet

## 1005.4 RK 6-10 BK



End stop, Mounting type: Mounting rail TS 35/7.5, Width: 9.5 mm, Colour: Beige

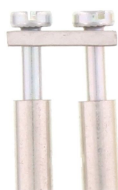
Article number	Article name	GTIN (EAN)	Packaging unit
<u>2828.0</u>	ES 35/K/ST BG	4044211055547	50

### Cross-connector



Cross-connector, No. of poles: 4, Mounting type: Can be screwed on, Width: 30.3 mm, Rated cross-section: 10 mm<sup>2</sup>, Colour: natural

Article number	Article name	GTIN (EAN)	Packaging unit
<u>2062.0</u>	Q 4	4044211048686	20 ST



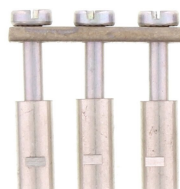
Cross-connector, No. of poles: 2, Mounting type: Can be screwed on, Width: 14.1 mm, Rated cross-section: 10 mm<sup>2</sup>, Colour: natural

Article number	Article name	GTIN (EAN)	Packaging unit
<u>2060.0</u>	Q 2	4044211048662	50 ST



Cross-connector, No. of poles: 10, Mounting type: Can be screwed on, Width: 78.9 mm, Rated cross-section: 10 mm<sup>2</sup>, Colour: natural

Article number	Article name	GTIN (EAN)	Packaging unit
<u>2063.0</u>	Q 10	4044211048693	10 ST



Cross-connector, No. of poles: 3, Mounting type: Can be screwed on, Width: 22.2 mm, Rated cross-section: 10 mm<sup>2</sup>, Colour: natural

Article number	Article name	GTIN (EAN)	Packaging unit
<u>2061.0</u>	Q 3	4044211048679	50 ST

### Insulated cross-connector



# Data sheet

## 1005.4 RK 6-10 BK

Insulated cross-connector, No. of poles: 10, Mounting type: Can be screwed on, Width: 78.4 mm, Colour: Yellow



Article number	Article name	GTIN (EAN)	Packaging unit
<u>2753.2</u>	QI 10 YE	4044211054892	10 ST

Insulated cross-connector, No. of poles: 4, Mounting type: Can be screwed on, Width: 28.8 mm, Colour: Yellow



Article number	Article name	GTIN (EAN)	Packaging unit
<u>2752.2</u>	QI 4 YE	4044211054885	20 ST

Insulated cross-connector, No. of poles: 2, Mounting type: Can be screwed on, Width: 13.6 mm, Colour: Yellow



Article number	Article name	GTIN (EAN)	Packaging unit
<u>2750.2</u>	QI 2 YE	4044211054861	50 ST

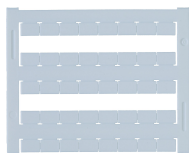
Insulated cross-connector, No. of poles: 3, Mounting type: Can be screwed on, Width: 21.7 mm, Colour: Yellow



Article number	Article name	GTIN (EAN)	Packaging unit
<u>2751.2</u>	QI 3 YE	4044211054878	50 ST

### Quick marking

Terminal marker / Pocket Maxicard, Length: 5 mm, Width: 8 mm, Colour: White



Article number	Article name	GTIN (EAN)	Packaging unit
<u>9323.7</u>	PMC SB 8/40 WH	4044211129231	400 ST

### Screwdriver

# Data sheet

## 1005.4 RK 6-10 BK

Screwdriver with bare blade, Colour: Black-grey



Article number	Article name	GTIN (EAN)	Packaging unit
<u>1087.0</u>	SDB 0,8x4,0	4044211014803	1 ST

### Test adapters



Test adapter, Length: 37.3 mm, Pitch size: 8 mm, Colour: Beige

Article number	Article name	GTIN (EAN)	Packaging unit
<u>2817.0</u>	TA 8/1/ST	4044211055431	10 ST

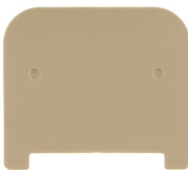
### Insulation plate



Insulation plate, Colour: Beige

Article number	Article name	GTIN (EAN)	Packaging unit
<u>2003.2</u>	TRS 1 BG	4044211048068	100

### Partition plate



Partition plate, Width: 1.5 mm, Colour: Beige

Article number	Article name	GTIN (EAN)	Packaging unit
<u>2002.2</u>	TW 2,5-10 BG	4044211048044	50

### ##INVERSE##CONTA-CONNECT



Test adapter, Length: 37.3 mm, Pitch size: 8 mm, Colour: Beige

Article number	Article name	GTIN (EAN)	Packaging unit
<u>2817.0</u>	TA 8/1/ST	4044211055431	10 ST