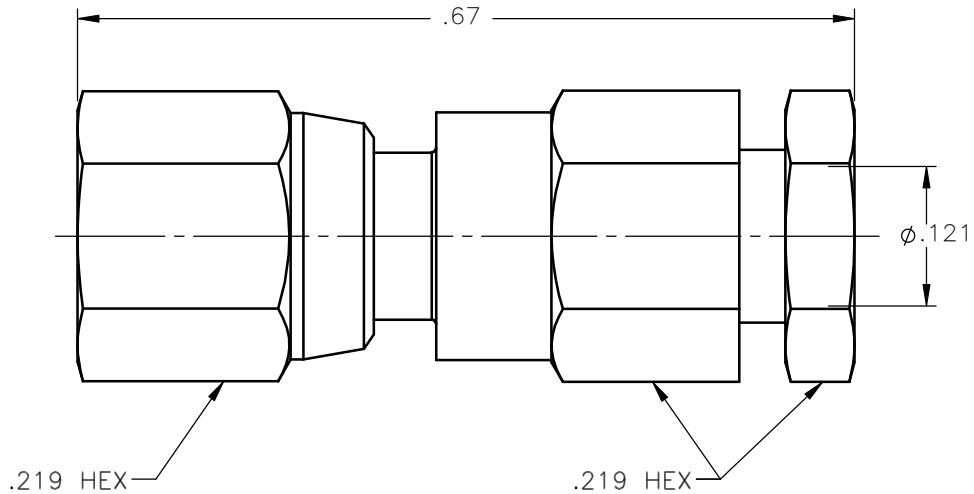


| REVISIONS |                 |          |          |
|-----------|-----------------|----------|----------|
| REV.      | DESCRIPTION     | DATE     | APPROVED |
| A         | INITIAL RELEASE | 09/17/09 | A.D.M.   |



NOTES:


MATERIALS:

1. INSULATORS = VIRGIN WHITE TEFLON PER ASTM D1710, GRADE 1, TYPE I, CLASS "B".
2. CONTACT = BERYLLIUM COPPER PER ASTM B196, ALLOY C17300, TEMPER TD04.
3. ALL OTHER METAL PARTS = BRASS PER ASTM B16, ALLOY C36000, TEMPER H02.

FINISHES:

1. CONTACT = GOLD PLATE PER MIL-G-45204, TYPE II, CLASS 1, GRADE C, OVER .00010 TO .00020 STRESS FREE SULFAMATE NICKEL PER QQ-N-290.
2. ALL OTHER METAL PARTS = GOLD PLATE PER MIL-G-45204, TYPE II, CLASS 0, GRADE C, OVER .00010 TO .00020 COPPER STRIKE PER MIL-C-14550.

Property of Radiall Incorporated  
 This document cannot be reproduced or  
 communicated to a third party without prior  
 written permission of RADIALL Incorporated.

|   |                                    |                  |   |  |              |
|---|------------------------------------|------------------|---|--|--------------|
| UNLESS OTHERWISE SPECIFIED<br>DIMENSIONS ARE IN INCHES<br>TOLERANCES ON | DWN:<br>A.D.M.                     | DATE<br>09/17/09 |  <b>APPLIED ENGINEERING PRODUCTS</b><br>104 John W. Murphy Dr.<br>New Haven, CT 06513<br>a RADIALL company |  |              |
|   | CHKD:<br>D.N.                      | DATE<br>09/17/09 |   |  |              |
| DECIMAL   | ANGLE                              | APVD:<br>J.M.    | DATE<br>09/17/09  | <b>SMC STRAIGHT PLUG</b><br><b>SOLDER-CLAMP TYPE</b><br><b>FOR .085 S/R &amp; SIMILAR CABLES</b> |              |
| REFERENCE:  | MATERIALS & FINISHES:<br>SEE NOTES | SIZE<br>A        | FSCM NO.<br>19505   |  |              |
| ORIGINATED: A.D.M.<br>DATE: 09/17/09                                    | SCALE 6:1                          |                  | THIRD ANGLE PROJECTION  |  | SHEET 1 OF 1 |

1002-1541-010