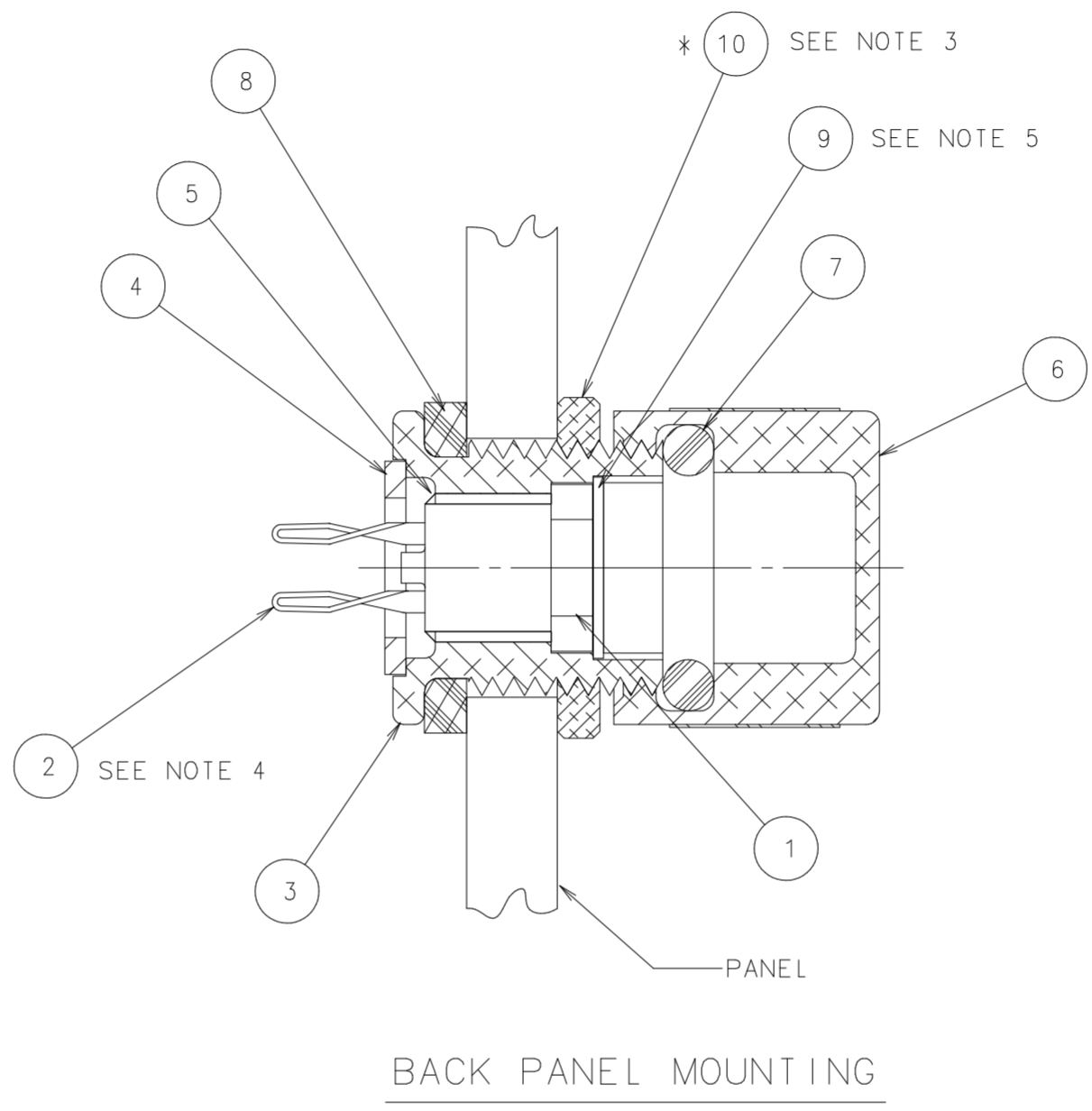


| | | |
|-------------|--------|---------|
| PART No. | CARTON | BAG |
| 02800002Z | 580521 | 890-990 |
| 02800002ZXA | 580509 | N/A |

| LTR | DATE | REVISION | CHK | APD |
|-----|----------|---|-----|-----|
| V | 10/24/02 | 82332C- REVISE & REDRAWN ON NEW FORMAT JMB | | |
| W | 11/01/06 | 85090C-CHG PKG NOTES & 914-020 TO 914-529 PJM | | |
| Y | 06/26/07 | 85522D ADD GRAPHICS LABEL RP | | |
| | | | | |
| | | | | |
| | | | | |
| | | | | |
| | | | | |
| | | | | |
| | | | | |
| | | | | |
| | | | | |



| -- | 914-529 | LABEL | 6.700 | EAD |
|----|--------------|------------------|--------|-----|
| -- | SEE CHART | BAG | 6.700 | EAD |
| -- | SEE CHART | CARTON | 6.700 | EAD |
| -- | 580278 | PARTITION | 20.100 | EAD |
| -- | 580219 | FOAM | 6.700 | EAD |
| 10 | 903-060 | NUT | 1000 | EA |
| 9 | 901-251 | ORIENTATION DISC | 1000 | EA |
| 8 | 901-166-001 | HOUSING "O" RING | 1000 | EA |
| 7 | 901-105 | KNOB "O" RING | 1000 | EA |
| 6 | 280002-2 | KNOB | 1000 | EA |
| 5 | 087232 | ADHESIVE | .27 | LB |
| 4 | 901-270 | WASHER | 1000 | EA |
| 3 | 280002-1 | HOUSING | 1000 | EA |
| 2 | 282001-4 | TERMINAL, CLIP | 2000 | EA |
| 1 | 281001-3 | BODY | 1000 | EA |
| NO | COMPONENT NO | DESCRIPTION | QTY/M | U/M |

NOTE:

1. FINAL ASSEMBLY MUST BE CAPABLE OF ACCEPTING A L.F. MICROFUSE.
2. WHEN INSPECTED AS A FINAL ASSEMBLY ALL NOTES AND CRITICAL DIM'S FROM PIECE PART AND SUB-ASS'Y DRAWINGS APPLY.
3. * = WHEN REQUIRED THIS PART WILL BE ASSEMBLED AND SUFFIX "A" ADDED TO THE CATALOG No.
4. TWIST TERMINALS 90° AT BASE BEFORE SPREADING.
5. ADD SMALL AMOUNT OF ADHESIVE 087232 AROUND DISC PERIMETER AFTER ASSEMBLY (REF. STD. #095088)

PACKAGING NOTES:

PACK 150 FUSE POSTS PER CARTON (SEE CHART)
 - CUT FOAM 580219 INTO (6) PIECES APPROX. 4 x 8
 PLACE 2 PIECES IN BOTTOM OF CARTON AND INSERT PARTITION ASSEMBLY 580278.
 - PLACE ONE FUSE POSTS IN EACH CELL (50 TOTAL).
 - PLACE FOAM ON TOP OF PARTITION ASSEMBLY.
 - REPEAT FOR (2) ADDITIONAL LAYERS, 50 PER LAYER/3 LAYERS = 150 TOTAL.
 - FOR UNASSEMBLED VERSIONS PLACE HARDWARE IN BAG 890-990 AND PLACE ALONG END OF PARTITIONS. LABEL WITH 914-529 USING SAP BAR/ONE SYSTEM RAGS-4 AS SHOWN PER GENERAL SPEC. LABEL LS-000033.

02800002Z

QTY: 150
 ACS MICRO FUSE HLDG 2A
 CAT. NO. 02800002

(1P)PART NO: 02800002Z

(Q)QTY: 150

(1)LOT NO: 333333333333

DATE CODE: 01/10/05
(MM/DD/YY)

BILL OF MATERIAL

UNLESS OTHERWISE SPECIFIED, DIMENSIONS DO NOT INCLUDE PLATING.

| | | | |
|------|--|--|--|
| ○ | DENOTES CRITICAL CHARACTERISTICS. | | |
| CPK | DENOTES CPK DIMENSIONS, -MINIMUM CPK VALUE | | |
| (ST) | DENOTES A CHARACTERISTIC THAT PROVIDES AN INDICATION OF PROCESS PERFORMANCE. PROCEDURE FOR MEASUREMENT AND TRACKING TO BE DEFINED IN LITTELFUSE INSPECTION INSTRUCTIONS. | | |
| CP | DENOTES CP DIMENSIONS, -MINIMUM CP VALUE MUST BE WITHIN THE DIMENSIONAL LIMITATIONS SHOWN ON DRAWING AND INITIALLY LOCATED TO ALLOW FOR MAXIMUM TOOL LIFE. | | |

| | | | |
|-----------|-----------|----|--------|
| COPIES TO | MATL SPEC | | |
| 1 | 9 | 18 | FINISH |
| 2 | 10 | 19 | |
| 3 | 12 | 20 | |
| 4 | 13 | 21 | |
| 5 | 14 | 23 | |
| 6 | 15 | 33 | |
| 7 | 16 | 43 | |
| 8 | 17 | 53 | |

| | | | | | |
|------|-----|------|----------|------------|-------|
| DRW | JMB | DATE | 10/24/02 | SCALE | 4=1 |
| CHK | | DATE | | SUPER DR | |
| APPD | | DATE | | RAW STK WT | LBS/M |

TOLERANCE UNLESS OTHERWISE SPECIFIED
 TWO PLACE DEC ±.01 FRACTION ±
 THREE PLACE DEC ±.005 ANGULAR ±1°

TITLE MICROFUSE FUSE POSTS
 (BACK PANEL MTG.)

| | | | |
|--|----------|-------------|-------|
| | REVISION | DRWG. NO. | FINAL |
| | Y | 02800002Z | |
| | | 02800002ZXA | |