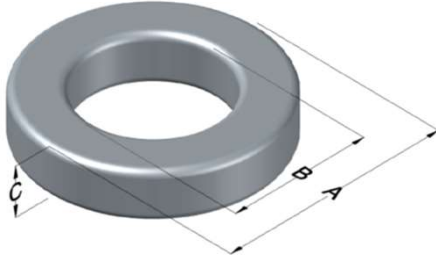




0055933A2

110 Delta Drive
 Pittsburgh, PA 15238
 NAFTA Sales: (1)800-245-3984
 HK Sales : (852)3102-9337
 magnetics@spang.com
 www.mag-inc.com



MPP Permeability (μ)	A_L (nH/T ²)	Core Marking			Coating Color
		Lot Number	Part Number	Inductance Grade	
14	18 \pm 8%	XXXXXX	55933A2	N/A	Grey

Dimensions	Uncoated		Coated Limits			Packaging
	(mm)	(in)	(mm)	(in)		
OD (A)	26.92	1.060	27.69	1.090	max	Cardboard cut-outs Box Qty= 400 pcs
ID (B)	14.73	0.580	14.10	0.555	min	
HT (C)	11.18	0.440	11.94	0.470	max	

Electrical Characteristics			Physical Characteristics						
Watt Loss @ 100kHz, 100mT max (mW/cm ³)	DC Bias min (oersteds)		Voltage Breakdown wire to wire min (V _{AC})	Break Strength min (kg)	Window Area W _a (mm ²)	Cross Section A _e (mm ²)	Path Length L _e (mm)	Volume V _e (mm ³)	Est. Weight (g)
	80%	60%							
1600	215	270	3000	77.0	156	65.4	63.5	4,150	32.9

Winding Information					Temperature Rating	
Winding Length Per Turn				Wound Coil Dimensions (mm)		Curie Temp: 460°C
Winding Factor	(mm)	Winding Factor	(mm)	40% Winding Factor	OD	30.9
					HT	16.7
0%	37.5	40%	44.8	Completely Full Window	Max OD	30.9
20%	41.1	45%	45.6		Max HT	21.5
25%	42.1	50%	46.8	Surface Area (mm ²)		
30%	42.8	60%	49.0	Unwound Core	2,500	
35%	43.8	70%	51.4	40% Winding Factor	3,500	
Coating Temp (Continuous up to): 200°C						
Notes:						

