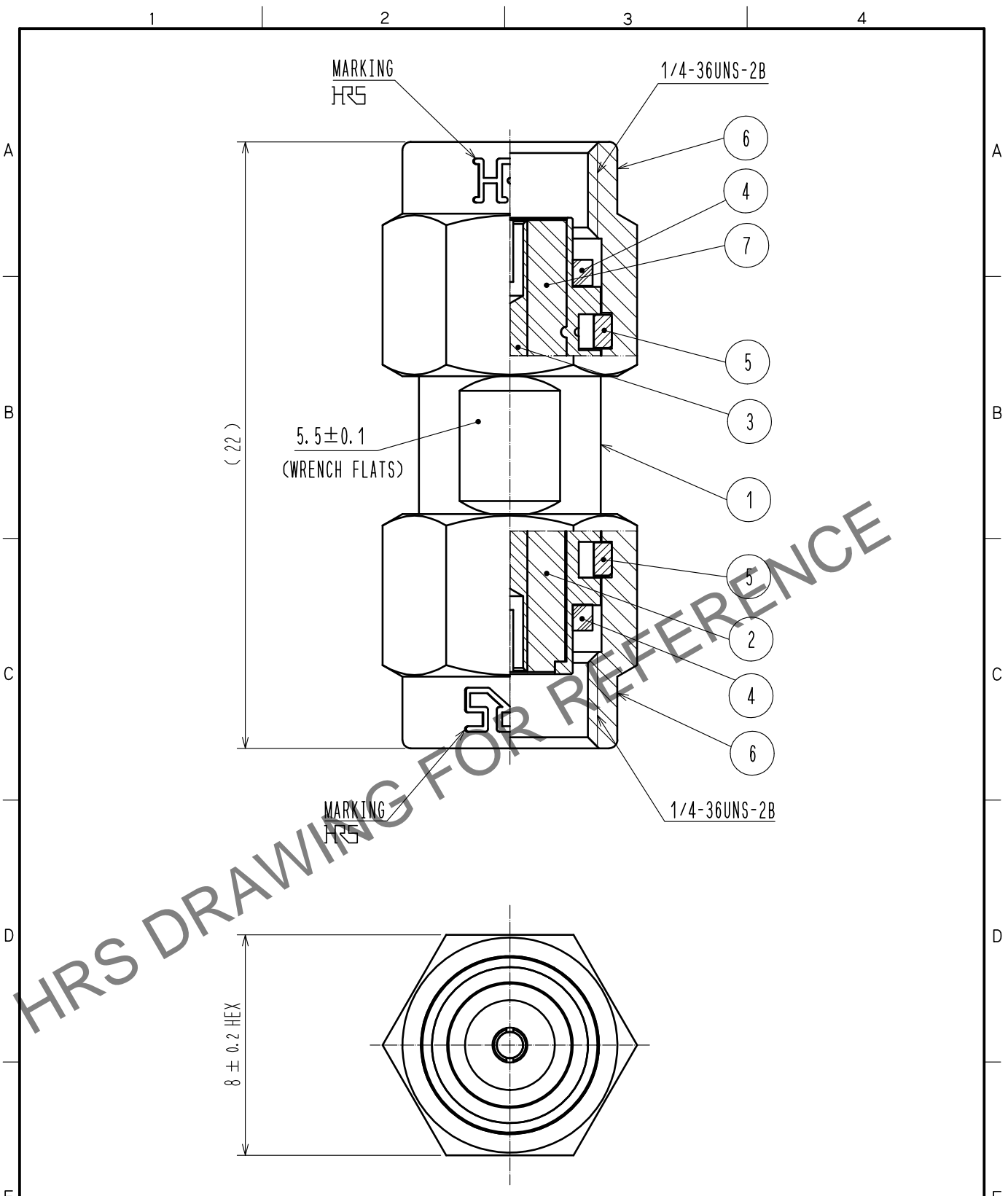


Aug.1.2023 Copyright 2023 HIROSE ELECTRIC CO., LTD. All Rights Reserved.  
In case of consideration for using Automotive equipment / device which demand high reliability, kindly contact our sales window correspondents.



RoHS COMPLIANT

|     |                  |                  |     |                  |                  |
|-----|------------------|------------------|-----|------------------|------------------|
| 4   | SILICON RUBBER   |                  | 7   | PTFE             |                  |
| 3   | BERYLLIUM COPPER | GOLD PLATING     | 6   | STAINLESS STEEL  | PASSIVATE        |
| 2   | PTFE             |                  | 5   | BERYLLIUM COPPER | NICKEL PLATING   |
| 1   | STAINLESS STEEL  | PASSIVATE        |     |                  |                  |
| NO. | MATERIAL         | FINISH . REMARKS | NO. | MATERIAL         | FINISH . REMARKS |

|                           |  |                |           |                                    |                              |         |      |
|---------------------------|--|----------------|-----------|------------------------------------|------------------------------|---------|------|
| UNITS<br>mm               |  | SCALE<br>5 : 1 | COUNT<br> | DESCRIPTION OF REVISIONS           | DESIGNED                     | CHECKED | DATE |
| HIROSE ELECTRIC CO., LTD. |  |                |           | APPROVED : TO. KATAYAMA 17. 08. 30 | DRAWING NO. EDC-379045-00-00 |         |      |
|                           |  |                |           | CHECKED : KY. SHIMIZU 17. 08. 30   | PART NO. SMA(R)-A-PP         |         |      |
|                           |  |                |           | DESIGNED : TY. OZAKI 17. 08. 30    | CODE NO. CL323-0127-0-00     |         |      |
|                           |  |                |           | DRAWN : TY. OZAKI 17. 08. 30       | 1/1                          |         |      |