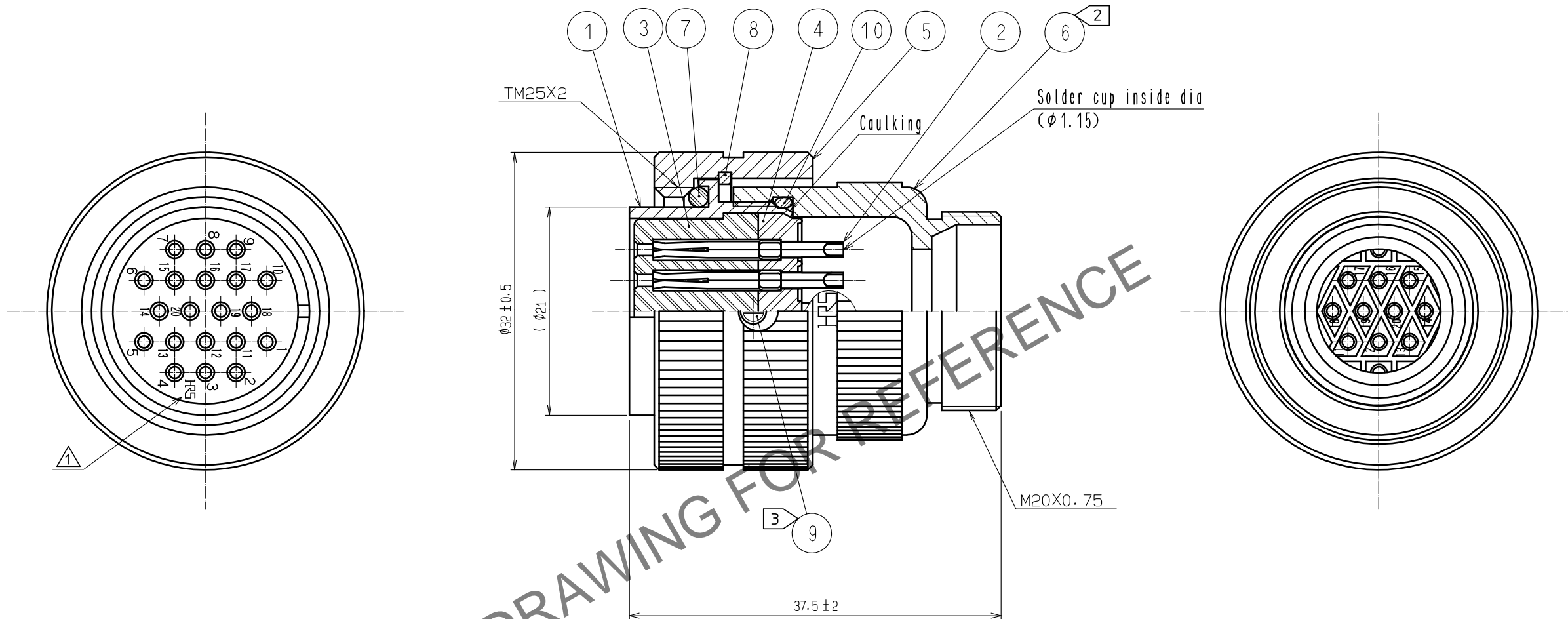
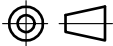




Aug.1.2023 Copyright 2023 HIROSE ELECTRIC CO., LTD. All Rights Reserved.
In case of consideration for using Automotive equipment / device which demand high reliability, kindly contact our sales window correspondents.



- NOTES
- 1 ONE EXAMPLE OF THE ROTATION OF REF. ⑥ TO REF. NO. ① IS SHOWN.
 - 2 THE RECOMMENDED TIGHTENING TORQUE OF REF. NO. ⑥ SHALL BE 2 TO 3N · m.
 - 3 THE RECOMMENDED TIGHTENING TORQUE OF REF. NO. ③ SHALL BE 0.2 TO 0.3N · m.
 - 4 THIS PRODUCTS TO BE USED WITH CABLE CLAMP, RM21WTP-CP(*) (71).
*DESIGNATE DIAMETER(mm) OF APPLICABLE CABLE.

5	BRASS	NICKEL PLATING		10	CHLOROPRENE RUBBER	(BLACK)	
4	PPS	(BLACK) UL94V-0		9	BRASS	NICKEL PLATING	
3	PPS	(BLACK) UL94V-0		8	PHOSPHOR BRONZE	NICKEL PLATING	
2	COPPER ALLOY	SILVER PLATING 5 μm min.		7	CHLOROPRENE RUBBER	(BLACK)	
1	BRASS	NICKEL PLATING		6	BRASS	NICKEL PLATING	
NO.	MATERIAL	FINISH . REMARKS			NO.	MATERIAL	FINISH . REMARKS

UNITS mm		SCALE 2 : 1		COUNT 1	DESCRIPTION OF REVISIONS DIS-C-00003596	DESIGNED TH. KAMEYA	CHECKED HY. KOBAYASHI	DATE 20191028
 HIROSE ELECTRIC CO., LTD.	APPROVED :HY. KOBAYASHI 20180222				DRAWING NO. EDC-110103-31-00			
	CHECKED :HY. KOBAYASHI 20180222				PART NO. RM21WTP-20S(31)			
	DESIGNED :HY. KISHI 20180222				CODE NO. CL109-1402-5-31			
	DRAWN :MK. INOUE 20180208				