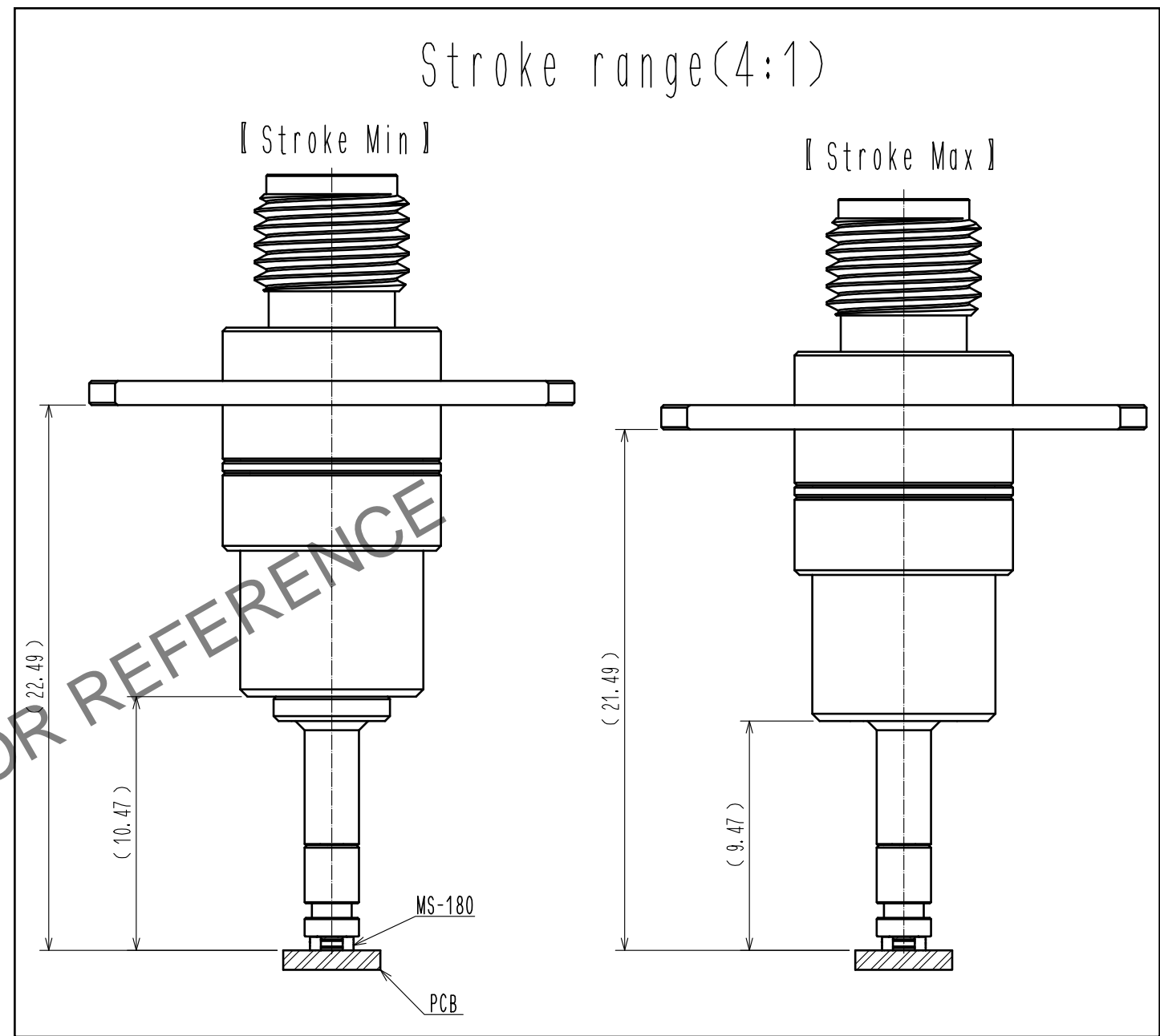
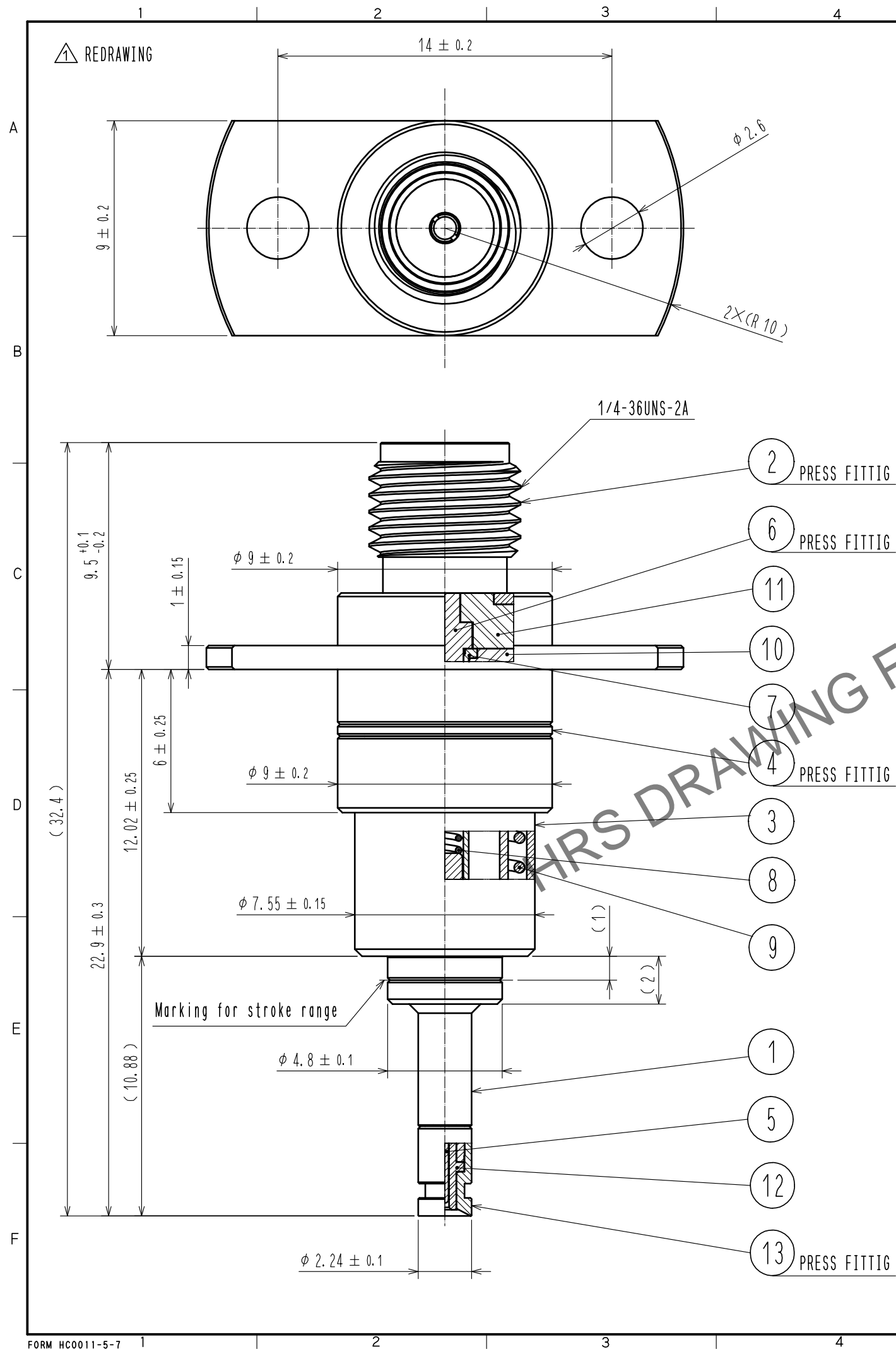


Aug.1.2023 Copyright 2023 HIROSE ELECTRIC CO., LTD. All Rights Reserved.  
In case of consideration for using Automotive equipment / device which demand high reliability, kindly contact our sales window correspondents.



Note 1. Please mate this product (MS-180-HRMJ-F6) vertically to the receptacle (MS-180) within the specified stroke range.

RoHS COMPLIANT

7	BERYLLIUM COPPER	GOLD PLATING			
6	BERYLLIUM COPPER	GOLD PLATING	13	STAINLESS STEEL	GOLD PLATING
5	BERYLLIUM COPPER	GOLD PLATING	12	PTFE	
4	BERYLLIUM COPPER	GOLD PLATING	11	PTFE	
3	PHOSPHOR BRONZE	NICKEL PLATING	10	PTFE	
2	STAINLESS STEEL	PASSIVATE	9	PIANO WIRE	GOLD PLATING
1	BERYLLIUM COPPER	GOLD PLATING	8	PIANO WIRE	NICKEL PLATING
NO.	MATERIAL	FINISH . REMARKS	NO.	MATERIAL	FINISH . REMARKS
UNITS mm					
SCALE 5 : 1		COUNT 1	DESCRIPTION OF REVISIONS DIS-D-00000095		DESIGNED RO. FURUYAMA
APPROVED : KY. SHIMIZU		14. 07. 31	DRAWING NO. EDC3-354383-00		
CHECKED : NK. NINOMIYA		14. 07. 30	PART NO. MS-180-HRMJ-F6		
DESIGNED : RO. FURUYAMA		14. 07. 30	CODE NO. CL358-0346-7-00		
DRAWN : RO. FURUYAMA		14. 07. 30			