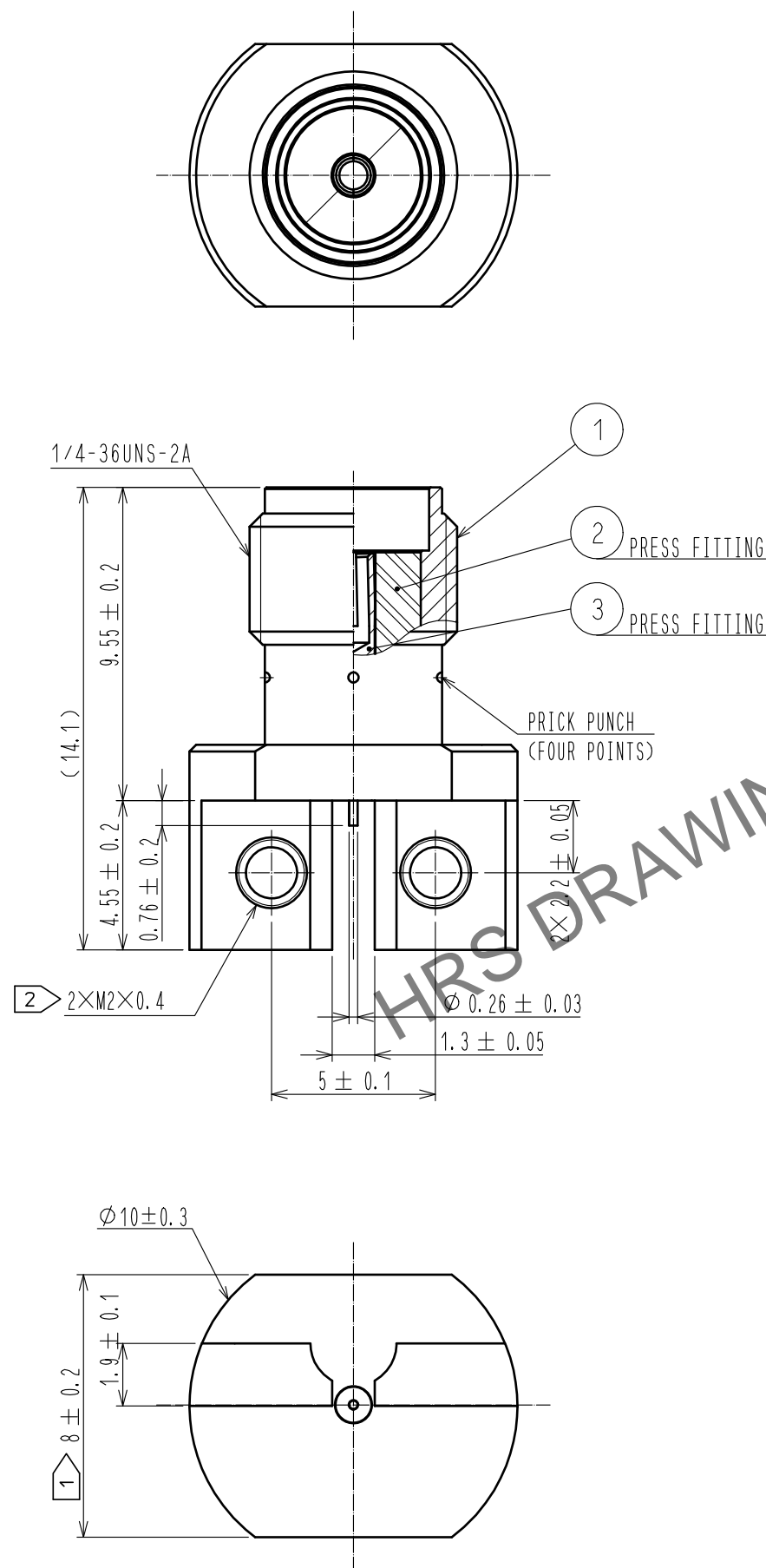


Aug.1.2023 Copyright 2023 HIROSE ELECTRIC CO., LTD. All Rights Reserved.
In case of consideration for using Automotive equipment / device which demand high reliability, kindly contact our sales window correspondents.

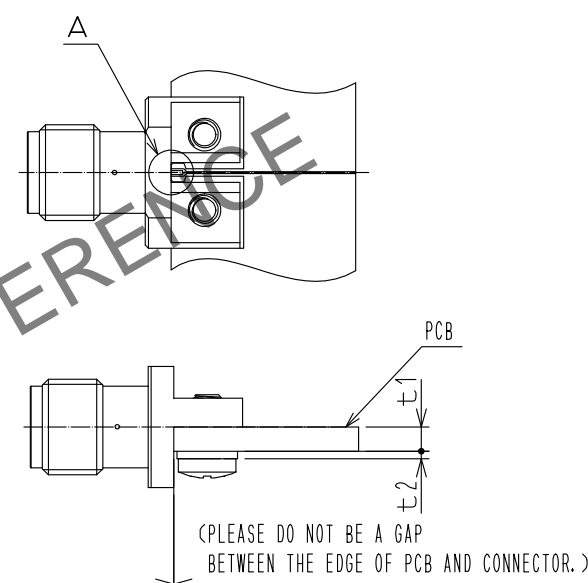
Metric screw thread type



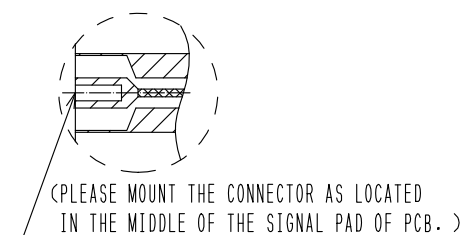
- NOTES
- 1 WHEN THE MATING CONNECTOR, PLEASE HOLD MILLING AREA OF 8 ± 0.2 WITH A WRENCH.
 - 2 M2 \times 0.4 SCREW TIGHTENING TORQUE IS 0.18 N \cdot m
PLEASE TIGHTEN THE SCREWS EVENLY WHEN MOUNTING THE CONNECTORS TO ENSURE STABLE ELECTRICAL CONTACT.
 - 3 PLEASE USE A PCB MOUNTING SCREW OF THE LENGTH OF L(mm).
THE LENGTH OF L(mm) IS PCB THICKNESS t1(mm) + SPRING WASHER THICKNESS t2(mm) + 2(mm).
PLEASE USE A SCREW WITH SPRING WASHER.
 - 4 THIS PRODUCT IS A SOLDERLESS MOUNTED CONNECTOR FOR PROTOTYPE EVALUATION OF HIGH SPEED TRANSMISSION BOARDS.
IT IS NOT RECOMMENDED FOR USE IN ACTUAL COMMERCIAL EQUIPMET.

MOUNTING OF CONNECTOR

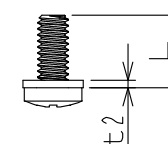
- (1) WHEN THE CONNECTOR IS MOUNTED ON PCB, PLEASE DO NOT BE A GAP BETWEEN THE EDGE OF PCB AND CONNECTOR.
- (2) PLEASE MOUNT THE CONNECTOR AS LOCATED IN THE MIDDLE OF THE SIGNAL PAD OF PCB.
- (3) (DELETED ARTICLE.)



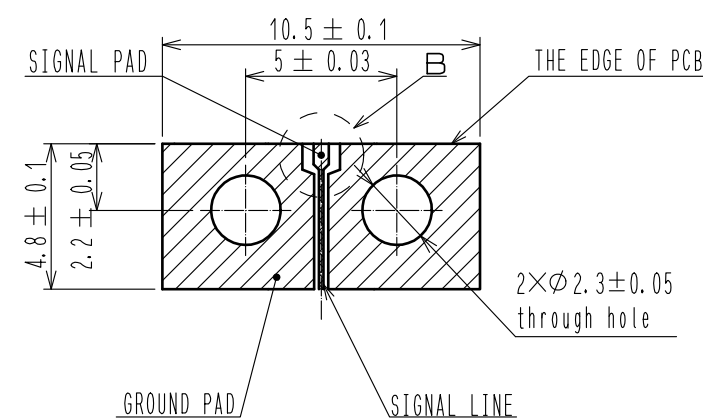
A(10:1)



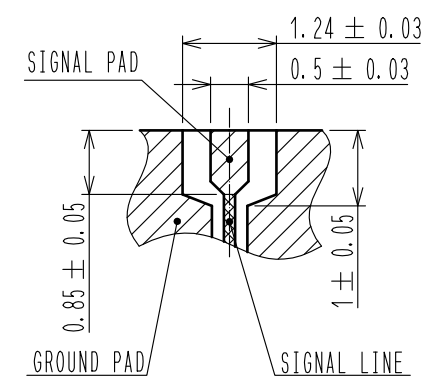
3 M2 \times 0.4 SCREW OUTSIDE DRAWING



RECOMMENDED PC BOARD PATTERN DRAWING(4:1)

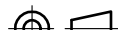




B(10:1)



PLEASE DESIGN THE SIGNAL PAD AND SIGNAL LINE WITH 50 Ω .
REGIST FOR SIGNAL PAD AND GROUND PAD IS PROHIBITED.

RoHS COMPLIANT

2		PTFE						RoHS COMPLIANT															
1		BRASS		GOLD PLATING				3		BERYLLIUM COPPER		GOLD PLATING											
NO.		MATERIAL		FINISH .				REMARKS		NO.		MATERIAL		FINISH .		REMARKS							
UNITS				SCALE				COUNT		DESCRIPTION OF REVISIONS				DESIGNED		CHECKED		DATE					
mm				5 : 1				2		DIS-D-00016447				NM. TORIUMI		TS. KANEKO		20230803					
 HIROSE ELECTRIC CO., LTD.				APPROVED				: KY. SHIMIZU				20150117				DRAWING NO.				EDC-339102-00-00			
				CHECKED				: KY. SHIMIZU				20150117				PART NO.				HRM(G)-300-467B-2			
				DESIGNED				: RO. YOKOYAMA				20150117				CODE NO.				CL0323-0923-5-00			
				DRAWN				: RO. YOKOYAMA				20150117				