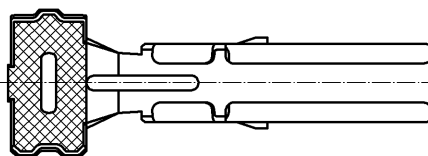
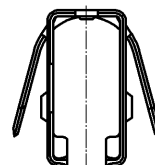
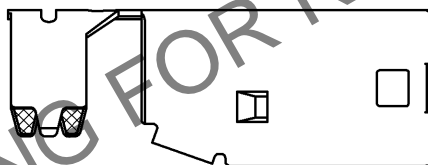
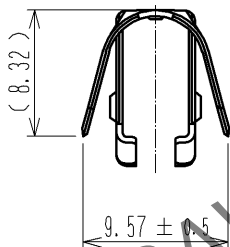
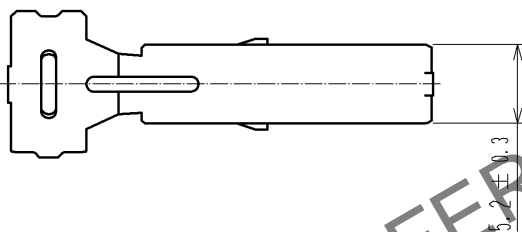
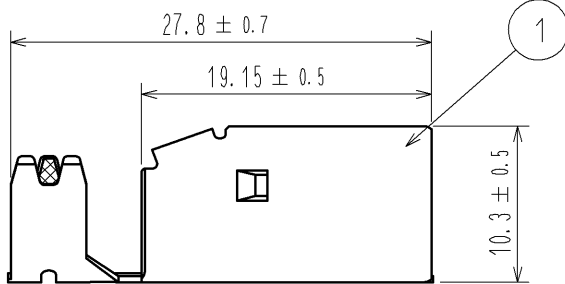


Aug.1.2023 Copyright 2023 HIROSE ELECTRIC CO., LTD. All Rights Reserved.  
In case of consideration for using Automotive equipment / device which demand high reliability, kindly contact our sales window correspondents.

ELV, RoHS COMPLIANT



Note 1. Applicable cable  $\phi 5.8 \sim 6.2\text{mm}$

1	COPPER ALLOY	TIN PLATING	T=0.4					
NO.	MATERIAL	FINISH . REMARKS		NO.	MATERIAL	FINISH . REMARKS		
UNITS mm		SCALE 2 : 1	COUNT 	DESCRIPTION OF REVISIONS		DESIGNED	CHECKED	DATE
HIROSE ELECTRIC CO., LTD.		APPROVED : AR. SHIRAI		11. 09. 12		DRAWING NO. EDC4-168931-00		
		CHECKED : NH. NAKATA		11. 09. 09		PART NO. GT17HSK-4S-6CF		
		DESIGNED : KK. FURUKAWA		11. 09. 08		CODE NO. CL767-0270-0-00		
		DRAWN : KK. FURUKAWA		11. 09. 08		1/1		