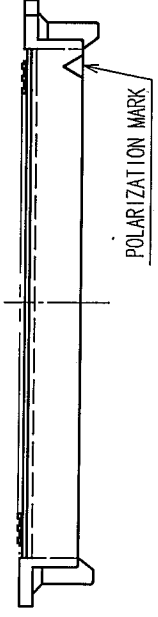
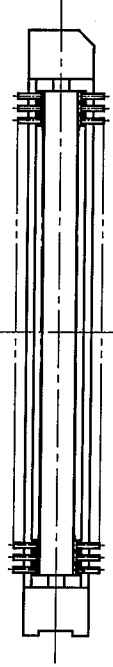
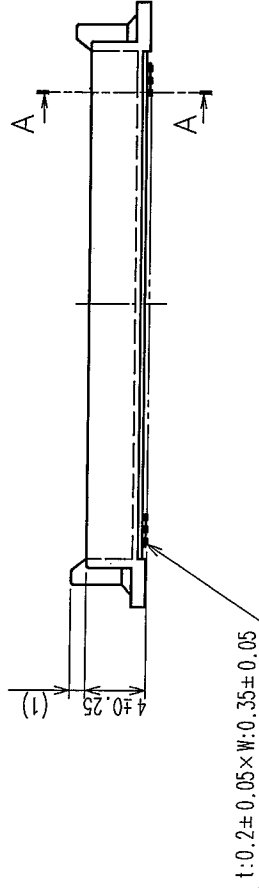
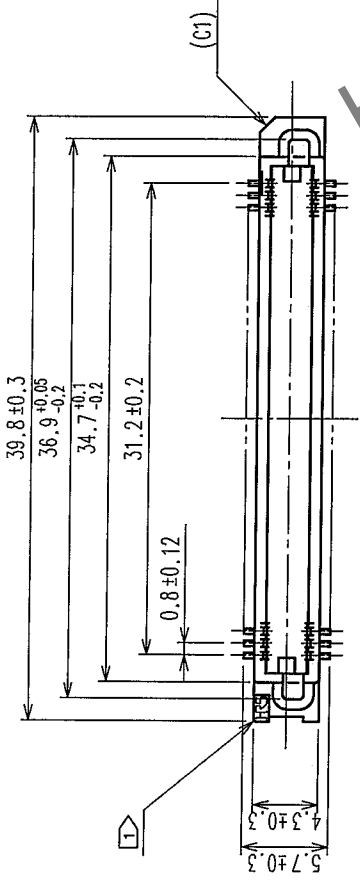
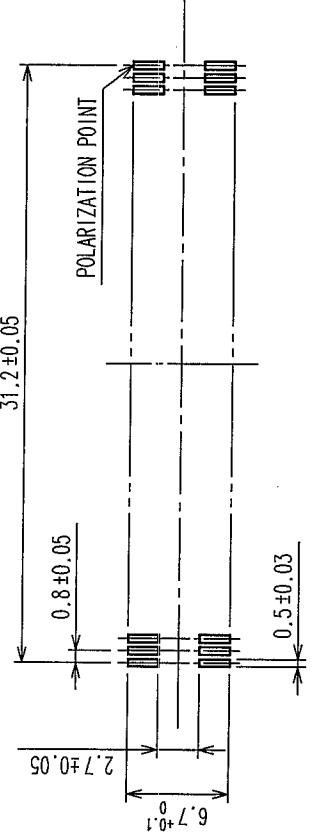



COUNT		DESCRIPTION OF REVISIONS	BY	CHKD	DATE	COUNT	DESCRIPTION OF REVISIONS	BY	CHKD	DATE
	△				• •	△				• •
	△				• •	△				• •
	△				• •	△				• •



RECOMMENDED P.C.B. LAND PATTERN  
(MOUNT SIDE)




NOTE 1  IR5 MARK SHALL BE OPTIONAL.

2 LEAD CO-PLANARITY SHALL BE 0.1mm MAX.

3 THE DIMENSIONS IN PARENTHESES ARE FOR REFERENCE.

4 EMBOSSED CARRIER TAPE PACKAGING SHALL BE APPLIED FOR THIS PRODUCT.

5 FOR MODIFICATION, ETC, PREVENTIVE HOLE FOR SINK MARK MAY BE ADDED ACCORDING TO CIRCUMSTANCES.

		DRAWING NO.	EDC3-071329-22	PART NO.	CONTACT AREA : GOLD 0.1μ m min. LEAD AREA : GOLD FLASH UNDER PLATING : NICKEL 1.5μ m min.					
					PHOSPHOR BRONZE	2				
SCALE 2 : 1	HRS		HIROSE ELECTRIC CO., LTD		CODE NO.		CL576-0207-9-92		1/2	
UNITS	mm									
CODE NO. (OLD)		FINISH, REMARKS		DRAWN Y.AOYAGI '05.09.16	DESIGNED J. Mada '05-09-26	CHECKED X. Uyama '05-09-26	APPROVED H. Okawa '05-09-27	RELEASED .		
NO.	MATERIAL					NO.	MATERIAL	FINISH, REMARKS		
1	POLYPHENYLENE SULFIDE	LIGHT BROWN		UL94V-O		2		PHOSPHOR BRONZE		

