

Sep.1.2023 Copyright 2023 HIROSE ELECTRIC CO., LTD. All Rights Reserved.
In case of consideration for using Automotive equipment / device which demand high reliability, kindly contact our sales window correspondents.

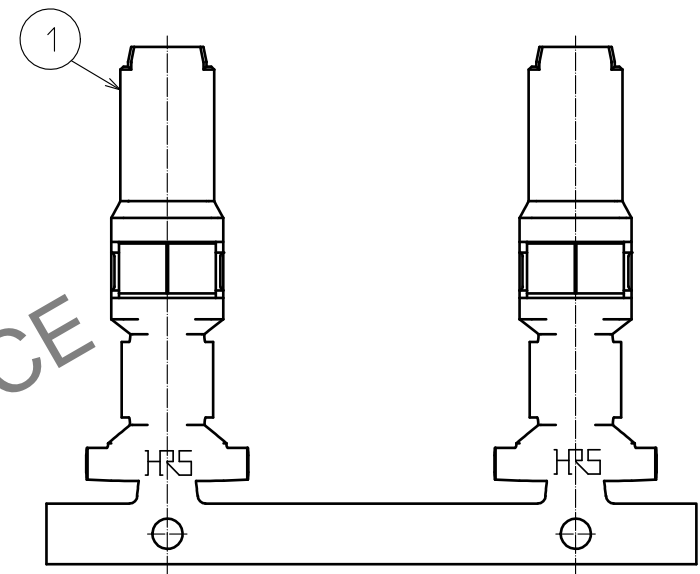
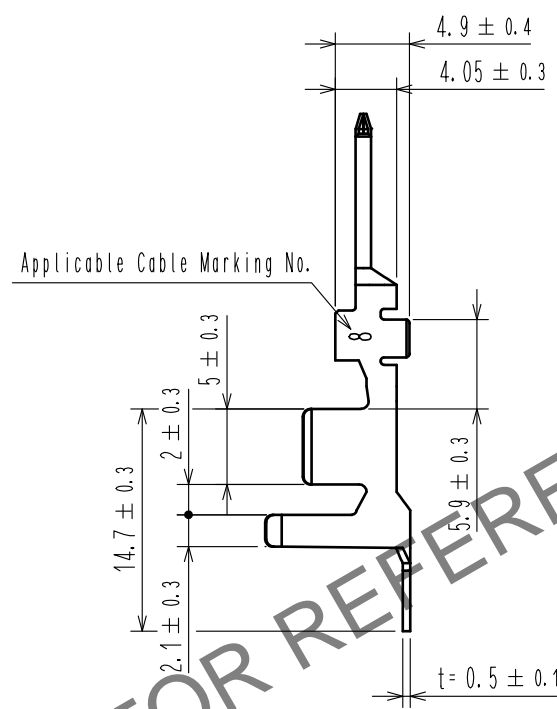
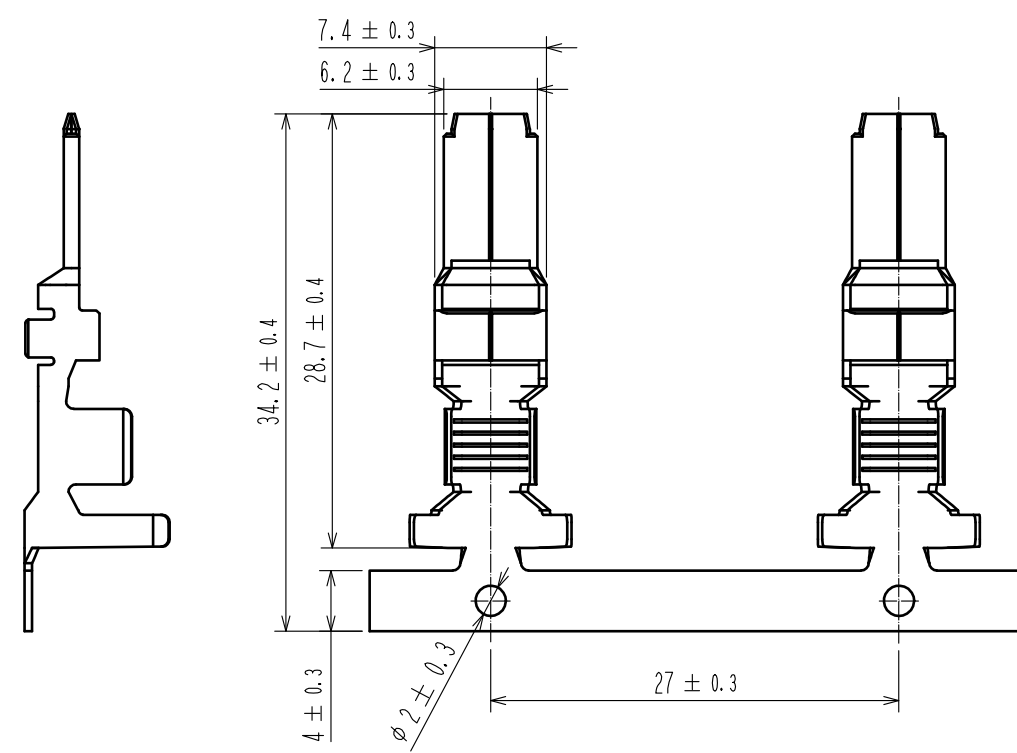
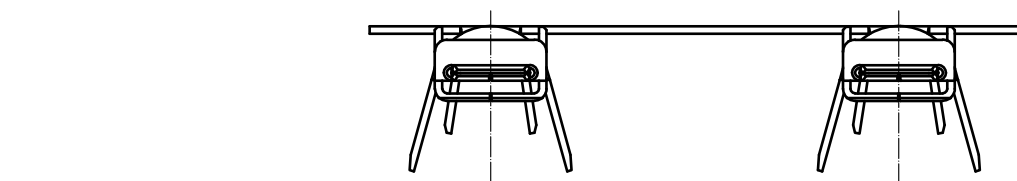
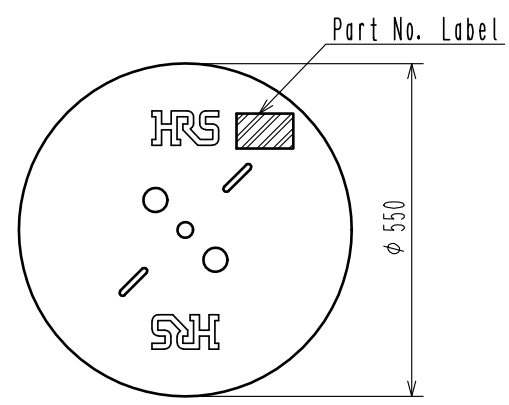


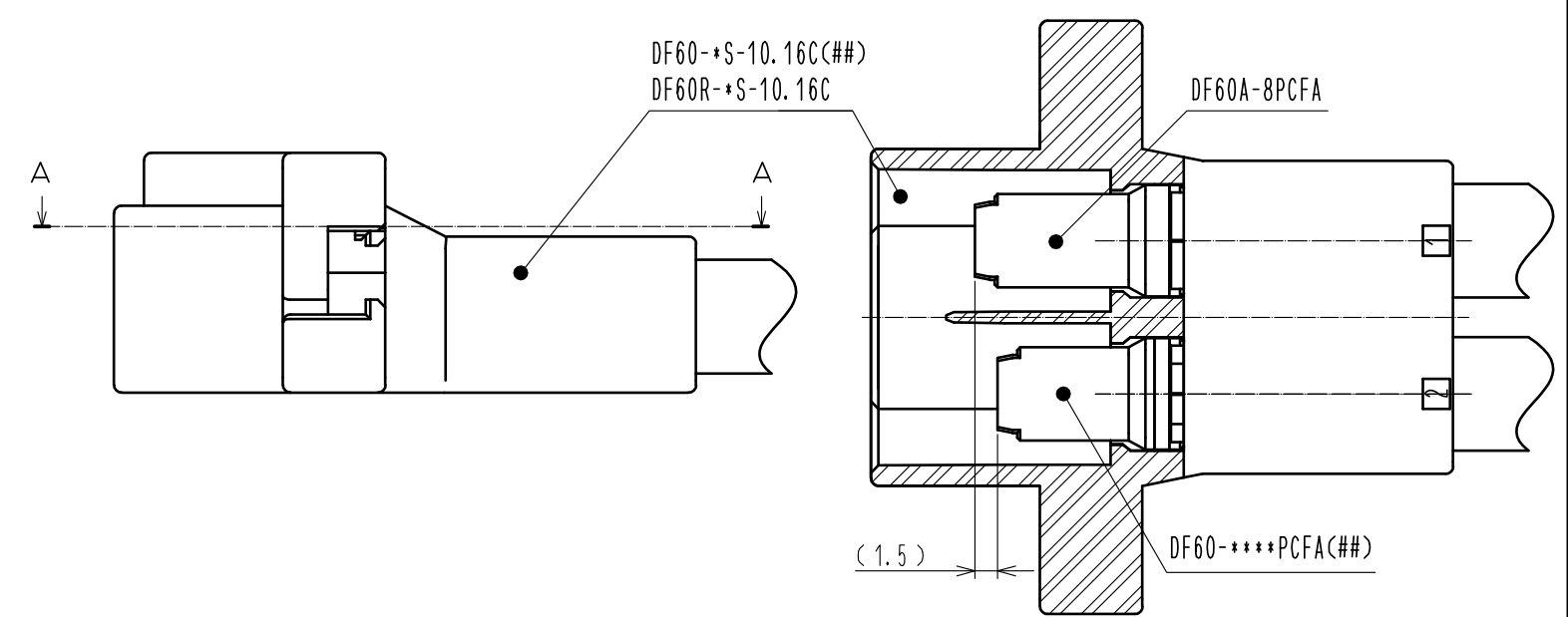
Figure with crimp contact in crimp socket

2 Style and Dimension of Reel



Detail of part No. Label

HRS		検査
品名コード	CL680-3057-0-00	
品名	DF60A-8PCFA	
数量	700	
仕様		
LOT No.		
機ざ目		
Section	Inspection	
Lot No.		
Specification		
Quantity		
Part No.		
Code No.		



NOTE 1. 1Reel: 700 Contacts.

2 Style of Reel and Box Shows in Figure.

3. Please be sure to check the form of crimping with a cable while adjusting applicator.
4. This product is the sequential connection contact for DF60-8PCFA(##).

NO.		MATERIAL	FINISH . REMARKS	NO.		MATERIAL	FINISH . REMARKS
UNITS mm		SCALE 2 : 1		COUNT		DESCRIPTION OF REVISIONS	
DESIGNED		CHECKED		DATE			
APPROVED : HS. OKAWA		16.06.21		DRAWING NO.		EDC-367007-00-00	
CHECED : TS. FUKUSHIMA		16.06.21		PART NO.		DF60A-8PCFA	
DESIGNED : TS. KUMAZAWA		16.06.21		CODE NO.		CL680-3057-0-00	
DRAWN : TS. KUMAZAWA		16.06.21					

1

COPPER ALLOY

• Contact Area

Surface : Au Plating 0.2μm min

Under Plating : Ni Plating 1μm min

• Others : Ni Plating 0.2μm min